

The logo for 'Your Choice' features a stylized blue and green circular icon above the brand name. The text 'Your Choice' is written in a white, cursive-style font, with a small registered trademark symbol (®) to the upper right of the word 'Choice'.

Your Choice<sup>®</sup>

A woman with long, wavy brown hair is standing outdoors in front of a lush green background. She is wearing a long-sleeved, floor-length beige dress with intricate gold embroidery. The embroidery features a large, ornate design on the chest and matching patterns on the sleeves and hem. She is also wearing a gold necklace, large gold earrings, and gold bangles on her wrists.

Kayra





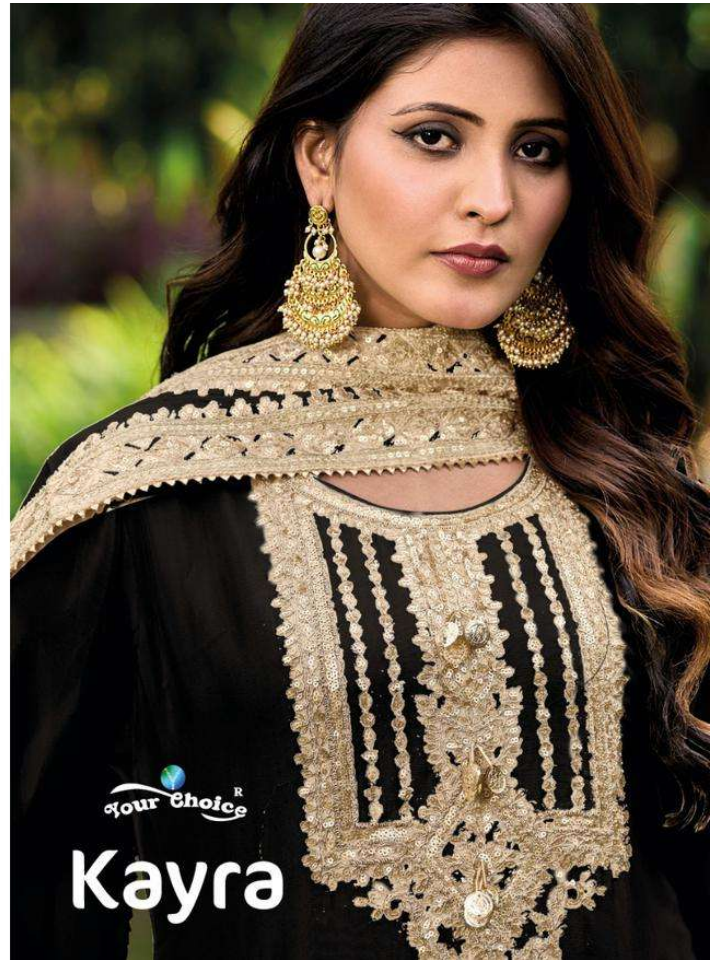
Your Choice<sup>®</sup>





1001

1002





## THE MOST COURAGEOUS

ACT IS STILL TO THINK FOR YOURSELF





The logo for 'Your Choice' features a stylized blue and green 'Y' icon above the brand name. 'Your' is in a script font, and 'Choice' is in a bold sans-serif font with a registered trademark symbol.

Your Choice<sup>®</sup>

A woman with long, wavy brown hair is wearing a long-sleeved, floor-length beige dress with intricate gold embroidery. The embroidery includes a large, ornate design on the chest and matching patterns on the sleeves and hem. She is also wearing a gold necklace, large gold earrings, and a gold bracelet. The background is a lush, green outdoor setting with trees and foliage.

Kayra



  
**your choice<sup>®</sup>**



**CHANGE THE HELTHIEST**  
FASHION SHOULD BE A FORM OF ESCAPISM, AND NOT A FORM OF IMPRISONMENT