

LILY&LALI[®]

GULS PRIDE

A PRODUCT OF Sifona[®] GROUP

COTTON
Carnival

VOL-2

LILY&LALI[®]

GULS PRIDE

A PRODUCT OF Sifona[®] GROUP

COTTON
Carnival

VOL-2





LILY&LALI[®]

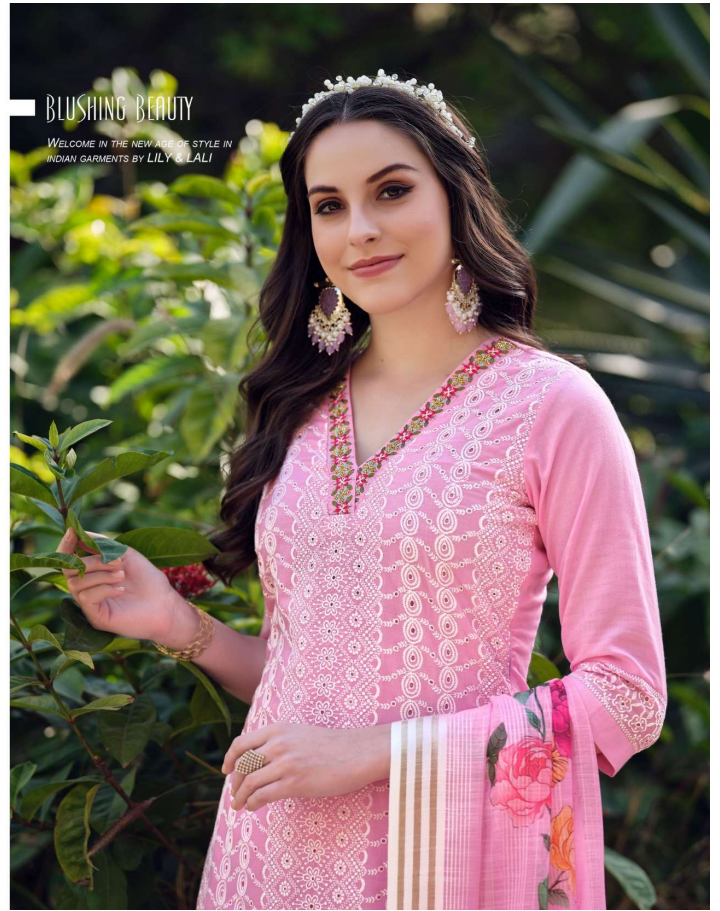
GULS PRIDE

A PRODUCT OF HIRANI GROUP

STYLE MANTRA

DESIGN BRINGS FLASHY PATTERNS
ON FILMSY FABRIC SIMPLEST
STYLE INTO SOMETHING WORTHWHILE.





LILY&LALI[®]
GULS PRIDE
A PRODUCT OF **WIONA** GROUP

STYLE MANTRA

DESIGN BRINGS FLASHY PATTERNS ON FLIMSY FABRIC
SIMPLEST STYLE INTO SOMETHING WORTHWHILE.





LILY&LALI®
GULS PRIDE
A PRODUCT OF Sirona GROUP



16901



16902



16903

COTTON
Carnival
VOL-2



16904



16905



16906





HOT FASHION TREND..

THE TOP DOT FASHION WOMAN IN INDIA IS ON
PAR WITH HER PRIVILEGED COUNTER
PARTS AROUND THE WORLD



LILY & LALI
GULSHRIDE
A PRODUCT OF FORTIS GROUP

16905





COTTON
Carnival VOL-2
LILY & LALI®
GULSPIDE
A PRODUCT OF *frida* GROUP

BLUSHING BEAUTY

WELCOME IN THE NEW AGE OF STYLE IN INDIAN GARMENTS BY LILY & LALI



LILY&LALI[®]
GULS PRIDE
A PRODUCT OF **SHIKHA** GROUP







LILY&LALI®

GULSPRIDE

A PRODUCT OF SIONA GROUP

COTTON *Carnival* VOL-2

FABRICS DETAILS

TOP

BORED WHITE SCHIFFLI WORK AND
HANDWORK

ON CAMBRIC COTTON WITH COTTON LINING

BOTTOM

PURE VISCOUSE PANT WITH LACE AND
STICHING'S PATTERN

DUPATTA

MUL COTTON PRINT DUPATTA(36")WITH
LACE AND TUSSLE

SIZES

M, L, XL, XXL, 3XL

NOTE - POCKET INSIDE THE PANT

