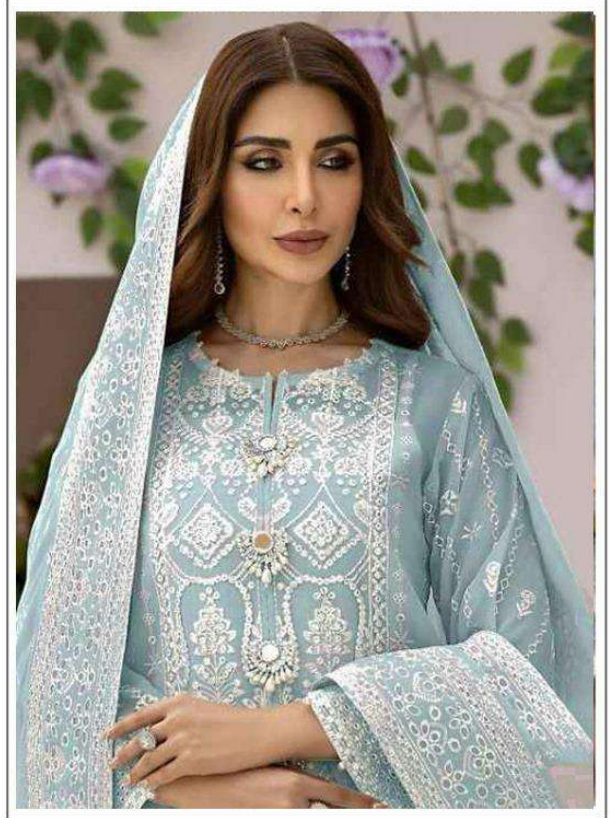






HOOR TEX



OR-27-A

TOP- DULL ORGANZA WITH HEAVY EMBROIDERY

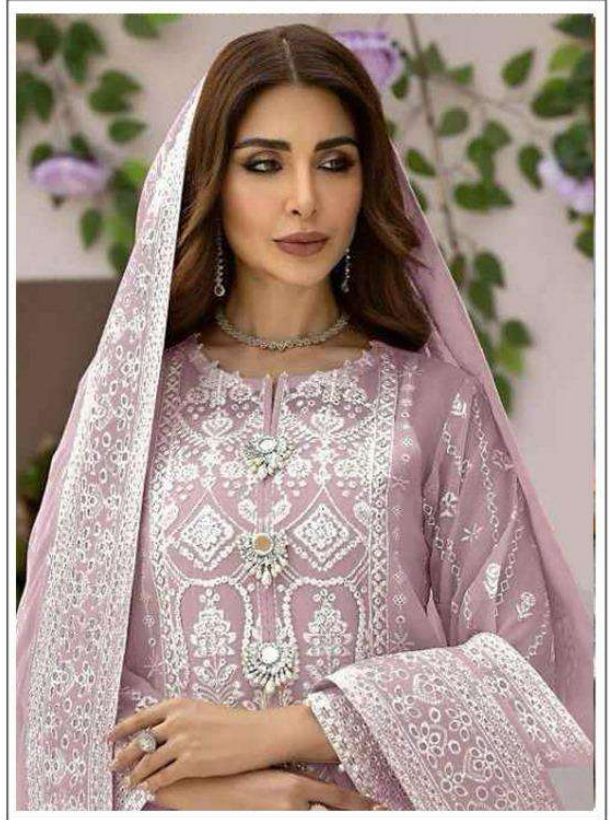
BOTTOM/INNER- SANTOON

DUPATTA/NET- ORGANZA WITH WORK WITH 4 SIDE CUT WORK LACE

☉ DRY CLEAN ONLY.
⊗ DO NOT USE ANY BLEACH OR STAIN REMOVING CHEMICAL.
☎ IRON THE FABRIC AT MODERATE TEMPERATURE.



HOOR TEX



OR-27-D

TOP- DULL ORGANZA WITH HEAVY EMBROIDERY

BOTTOM/INNER- SANTOON

DUPATTA/NET- ORGANZA WITH WORK WITH 4 SIDE CUT WORK LACE

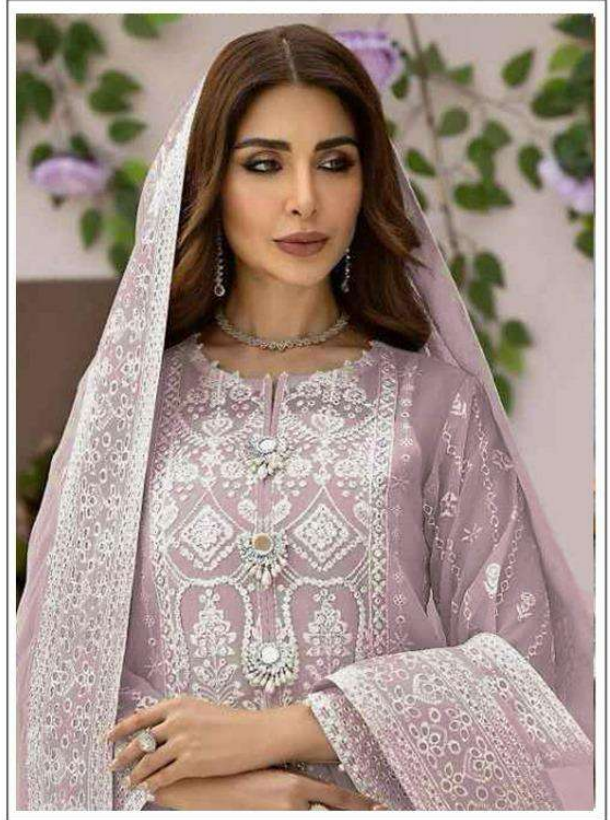
☉ DRY CLEAN ONLY.

☒ DO NOT USE ANY BLEACH OR STAIN REMOVING CHEMICAL.

☎ IRON THE FABRIC AT MODERATE TEMPERATURE.



HOOR TEX



OR-27-B

TOP- DULL ORGANZA WITH HEAVY EMBROIDERY

BOTTOM/INNER- SANTOON

DUPATTA/NET- ORGANZA WITH WORK WITH 4 SIDE CUT WORK LACE

☉ DRY CLEAN ONLY.
✗ DO NOT USE ANY BLEACH OR STAIN REMOVING CHEMICAL.
☎ IRON THE FABRIC AT MODERATE TEMPERATURE.









OR-27 A



OR-27 B



OR-27 C



OR-27 D



HOOR TEX





HOOR TEX



TOP- DULL ORGANZA WITH HEAVY EMBROIDERY

OR-27-C

BOTTOM/INNER- SANTOON

DUPATTA/NET- ORGANZA WITH WORK WITH 4 SIDE CUT WORK LACE

☉ DRY CLEAN ONLY.
⊗ DO NOT USE ANY BLEACH OR STAIN REMOVING CHEMICAL.
☎ IRON THE FABRIC AT MODERATE TEMPERATURE.