





TOP - Cotton With Embroidery Work

DUPATTA- Kota Chex With Embroidery Workk

BOTTOM - Cotton



D.No | 265-A



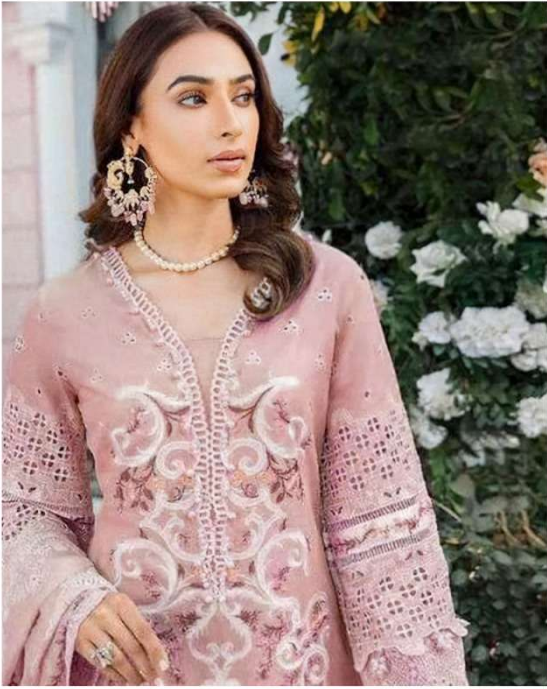
D.No | 265-B



D.No | 265-C



D.No | 265-D



D.NO.265 B

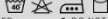


TOP - Cotton With Embroidery Work

DUPATTA- Kota Chex With Embroidery Workk

BOTTOM - Cotton

CARE INTRUCTIONS



- DRY CLEAN RECOMMENDED
- DO NOT OVEREXPOSE DAMP FABRIC TO STRONG SUNLIGHT
- DO NOT USE ANYTYPE OF BLEACH OR STAIN REMOVING CHEMICALS
- IRON AT MODERATE TEMPERATURE





D.NO.265 A

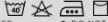


TOP - Cotton With Embroidery Work

DUPATTA- Kota Chex With Embroidery Workk

BOTTOM - Cotton

CARE INTRUCTIONS



- DRY CLEAN RECOMMENDED
- DO NOT OVEREXPOSE DAMP FABRIC TO STRONG SUNLIGHT
- DO NOT USE ANYTYPE OF BLEACH OR STAIN REMOVING CHEMICALS
- IRON AT MODERATE TEMPERATURE





D.NO.265 C

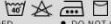


TOP - Cotton With Embroidery Work

DUPATTA- Kota Chex With Embroidery Workk

BOTTOM - Cotton

CARE INTRUCTIONS



- DRY CLEAN RECOMMENDED
- DO NOT USE ANYTYPE OF BLEACH OR STAIN REMOVING CHEMICALS
- DO NOT OVEREXPOSE DAMP FABRIC TO STRONG SUNLIGHT
- IRON AT MODERATE TEMPERATURE





D.NO.265 D



TOP - Cotton With Embroidery Work

DUPATTA- Kota Chex With Embroidery Workk

BOTTOM - Cotton

CARE INTRUCTIONS

- DRY CLEAN RECOMMENDED
- DO NOT USE ANYTYPE OF BLEACH OR STAIN REMOVING CHEMICALS
- DO NOT OVEREXPOSE DAMP FABRIC TO STRONG SUNLIGHT
- IRON AT MODERATE TEMPERATURE



