



Alzohaib

Shahzeb

CARE INSTRUCTIONS

- ☉ Dry clean only
- ⚠ Do not use any bleach or stain removing chemical
- ☐ Iron the fabric at moderate temperature
- ☀ Do not dry fabric in direct sunlight



Shahzeb

TOP Organza with Heavy Embroidery BOTTOM-INNER Heavy Santoon DUPATTA Organza with Heavy Embroidery



AZ.1008-A



AZ.1008-B



AZ.1008-C



AZ.1008-D

Alzohaib



Alzohaib

Shahzeb

AZ-1008-A

TOP
Organza with Heavy
Embroidery

BOTTOM-INNER
Heavy Santoon

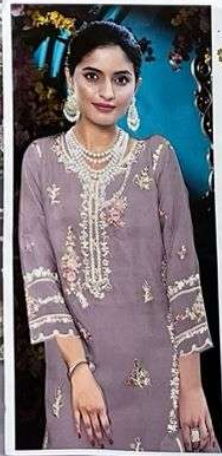
DUPATTA
Organza with Heavy
Embroidery

CARE INSTRUCTIONS
① Do not wash
② Do not use any bleach or color removing chemical
③ Do not iron at high temperature
④ Do not dry clean in usual way



Alzohaib

Alzohaib



Alzohaib

Shahzeb

AZ-1008-B

TOP

Organza with Heavy Embroidery

BOTTOM-INNER

Heavy Santoon

DUPATTA

Organza with Heavy Embroidery

CARE INSTRUCTIONS

- ☉ Dry clean only
- ☹ Do not use any bleach or stain remover
- ☹ Do not use fabric or ironing temperature
- ☹ Do not dry clean in a machine



Alzohaib

Alzohaib



Alzohaib

Shahzeb
AZ-1008-C

TOP
Organza with Heavy Embroidery

BOTTOM-INNER
Heavy Santoon

DUPATTA
Organza with Heavy Embroidery

CARE INSTRUCTIONS

- Do not iron
- Do not use steam iron or direct ironing
- Do not dry clean or machine wash
- Do not use bleach or color fastener

Alzohaib

Alzohaib



Alzohaib

Shahzeb

AZ-1008-D

TOP
Organza with Heavy
Embroidery

BOTTOM-INNER
Heavy Santoon

DUPATTA
Organza with Heavy
Embroidery

CARE INSTRUCTIONS
① Dry Clean only
② Do not use any bleach or stain removing chemical
③ Iron the fabric at moderate temperature
④ Do not dry fabric in direct sunlight



Alzohaib



Alzohaib

Shahzeb

AZ-1008-A

TOP

Organza with Heavy
Embroidery

BOTTOM-INNER

Heavy Santoon

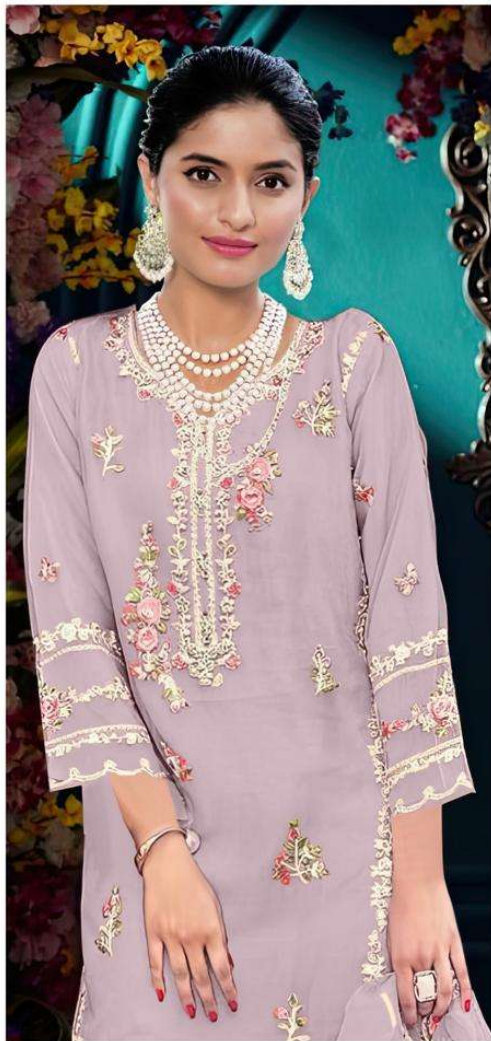
DUPATTA

Organza with Heavy
Embroidery

CARE INSTRUCTIONS

- ☉ Dry clean only
- ⚠ Do not use any bleach or stain removing chemical
- ☐ Iron the fabric at moderate temperature
- ☒ Do not dry fabric in direct sunlight





Alzohaib

Shahzeb

AZ-1008-B

TOP

Organza with Heavy
Embroidery

BOTTOM-INNER

Heavy Santoon

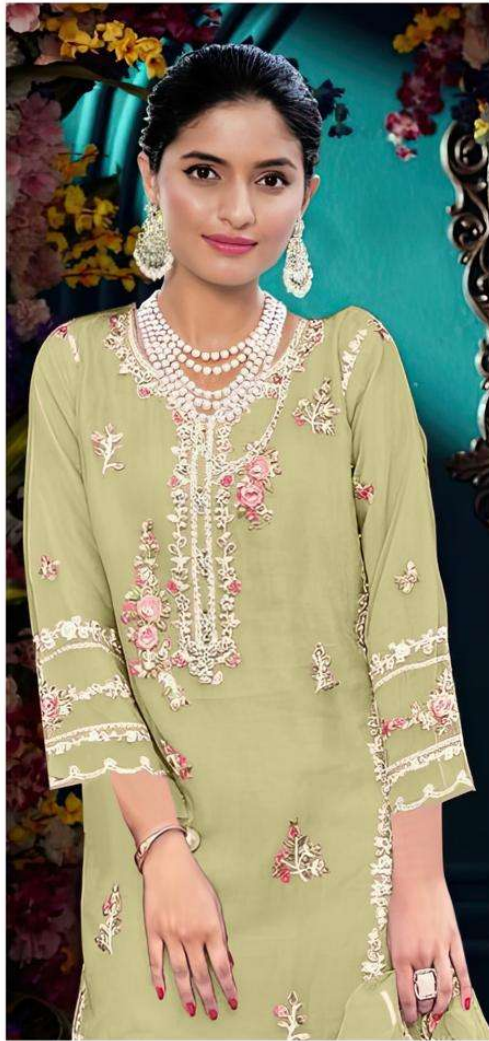
DUPATTA

Organza with Heavy
Embroidery

CARE INSTRUCTIONS

- ☉ Dry clean only
- ⚠ Do not use any bleach or stain removing chemical
- ☐ Iron the fabric at moderate temperature
- ☒ Do not dry fabric in direct sunlight





Alzohaib

Shahzeb

AZ-1008-C

TOP

Organza with Heavy
Embroidery

BOTTOM-INNER

Heavy Santoon

DUPATTA

Organza with Heavy
Embroidery

CARE INSTRUCTIONS

- ☉ Dry clean only
- ⚠ Do not use any bleach or stain removing chemical
- ☐ Iron the fabric at moderate temperature
- ☒ Do not dry fabric in direct sunlight





Alzohaib

Shahzeb

AZ-1008-D

TOP

Organza with Heavy
Embroidery

BOTTOM-INNER

Heavy Santoon

DUPATTA

Organza with Heavy
Embroidery

CARE INSTRUCTIONS

- ☉ Dry clean only
- ⚠ Do not use any bleach or stain removing chemical
- ☐ Iron the fabric at moderate temperature
- ☒ Do not dry fabric in direct sunlight





Alzohaib

Shahzeb