



# *Feva* Vol-03







"Lehenga: twirling beauty, tradition wrapped in modern grace."

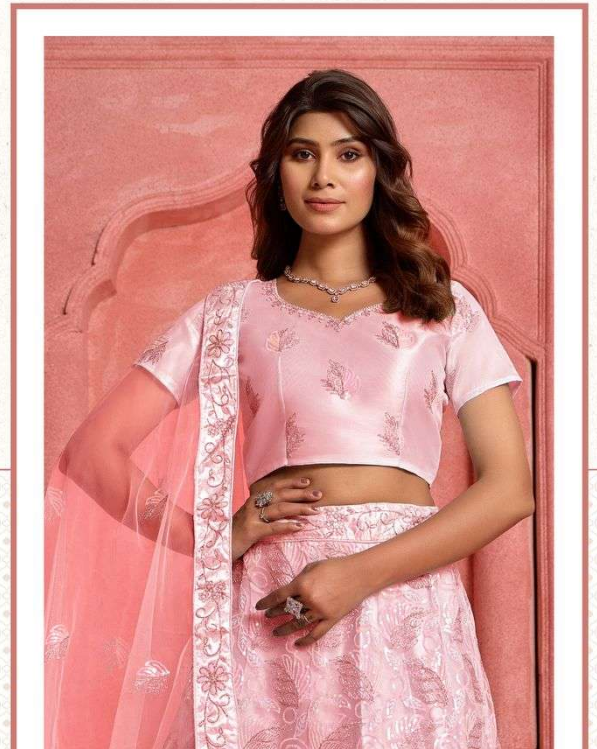
Q 1004 A P





"When draped in a lehenga, every woman feels like a queen, radiating beauty, grace, and cultural pride."

₹ 1004 B







"Every pleat of a lehenga reflects craftsmanship, every embellishment whispers luxury, and every taut showcases breathtaking elegance."

1004 C



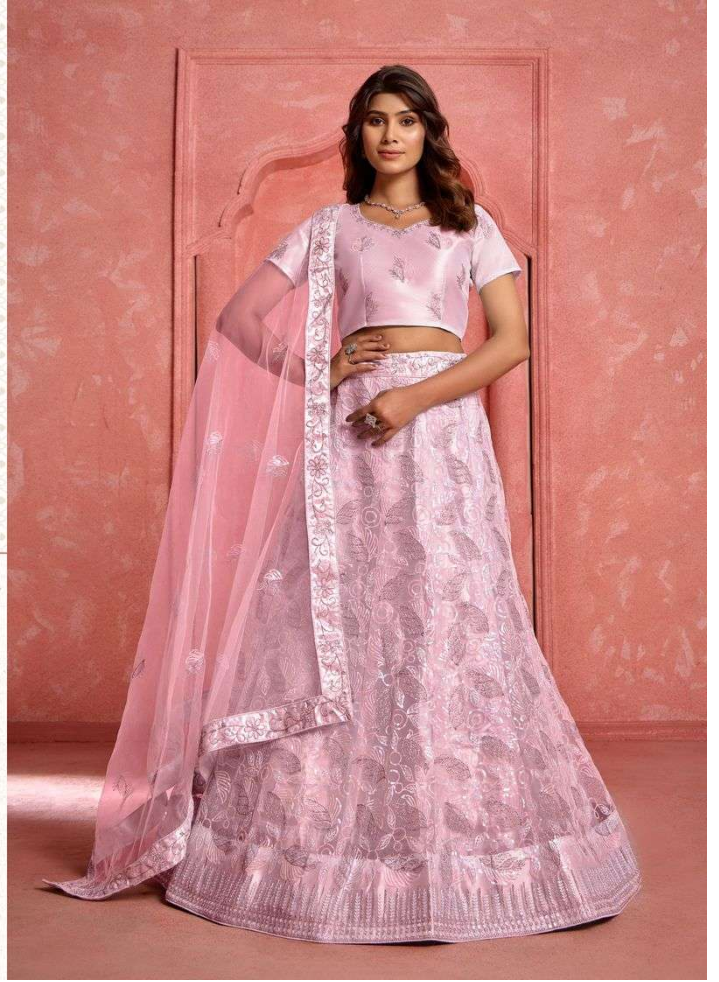




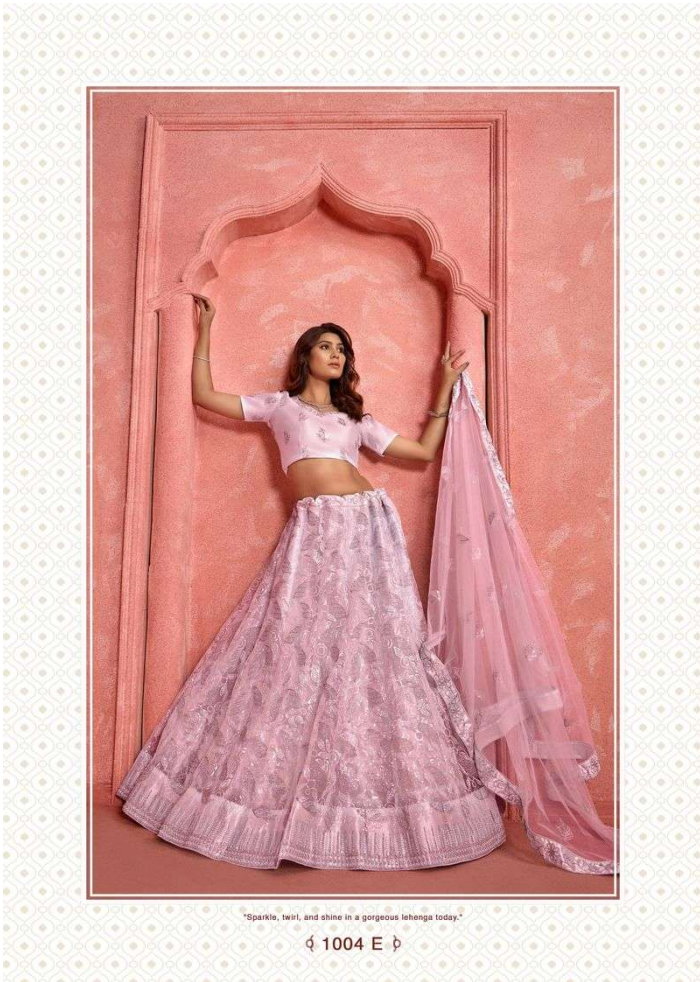


"Each twirl in a lehenga tells a story of beauty, tradition, and the joy of being effortlessly stunning."

₹ 1004 E ♡







"Sparkle, twirl, and shine in a gorgeous lehenga today."

₹ 1004 E ⚡



Design NO. (SKU)	Main Color	Lehenga Fabric	Choli Fabric	Dupatta Fabric	Size (Semi-Stitched)	Lehenga & Choli	Dupatta Work	Choli Length MTR	Lehenga Length MTR	Dupatta Length MTR	Weight
1004-A	BABY BLUE	NET WITH SATIN INNER	NET WITH SATIN INNER	BUTTERFLY NET	UPTO 42 BUST AND WAIST	Thread With Sequince Embroidered Work	Thread With Sequince Embroidered Work	1 MTR	42 INCH	2.30 MTR	1.5 KG
1004-B	Peach	NET WITH SATIN INNER	NET WITH SATIN INNER	BUTTERFLY NET	UPTO 42 BUST AND WAIST	Thread With Sequince Embroidered Work	Thread With Sequince Embroidered Work	1 MTR	42 INCH	2.30 MTR	1.5 KG
1004-C	Light Grey	NET WITH SATIN INNER	NET WITH SATIN INNER	BUTTERFLY NET	UPTO 42 BUST AND WAIST	Thread With Sequince Embroidered Work	Thread With Sequince Embroidered Work	1 MTR	42 INCH	2.30 MTR	1.5 KG
1004-D	LAVENDER	NET WITH SATIN INNER	NET WITH SATIN INNER	BUTTERFLY NET	UPTO 42 BUST AND WAIST	Thread With Sequince Embroidered Work	Thread With Sequince Embroidered Work	1 MTR	42 INCH	2.30 MTR	1.5 KG
1004-E	LIPGLOSS PINK	NET WITH SATIN INNER	NET WITH SATIN INNER	BUTTERFLY NET	UPTO 42 BUST AND WAIST	Thread With Sequince Embroidered Work	Thread With Sequince Embroidered Work	1 MTR	42 INCH	2.30 MTR	1.5 KG