

A woman with dark hair and a feather headband is posing in a maroon and gold saree. She is standing in a museum filled with vintage cars. The saree has a wide gold border and a floral pattern on the pallu. She is wearing a gold choker, earrings, and bangles. The background shows a red vintage car and other vehicles in a dimly lit museum.


KiraTM
CREATIONS

KAVISHA



MIDNIGHT MAJESTY

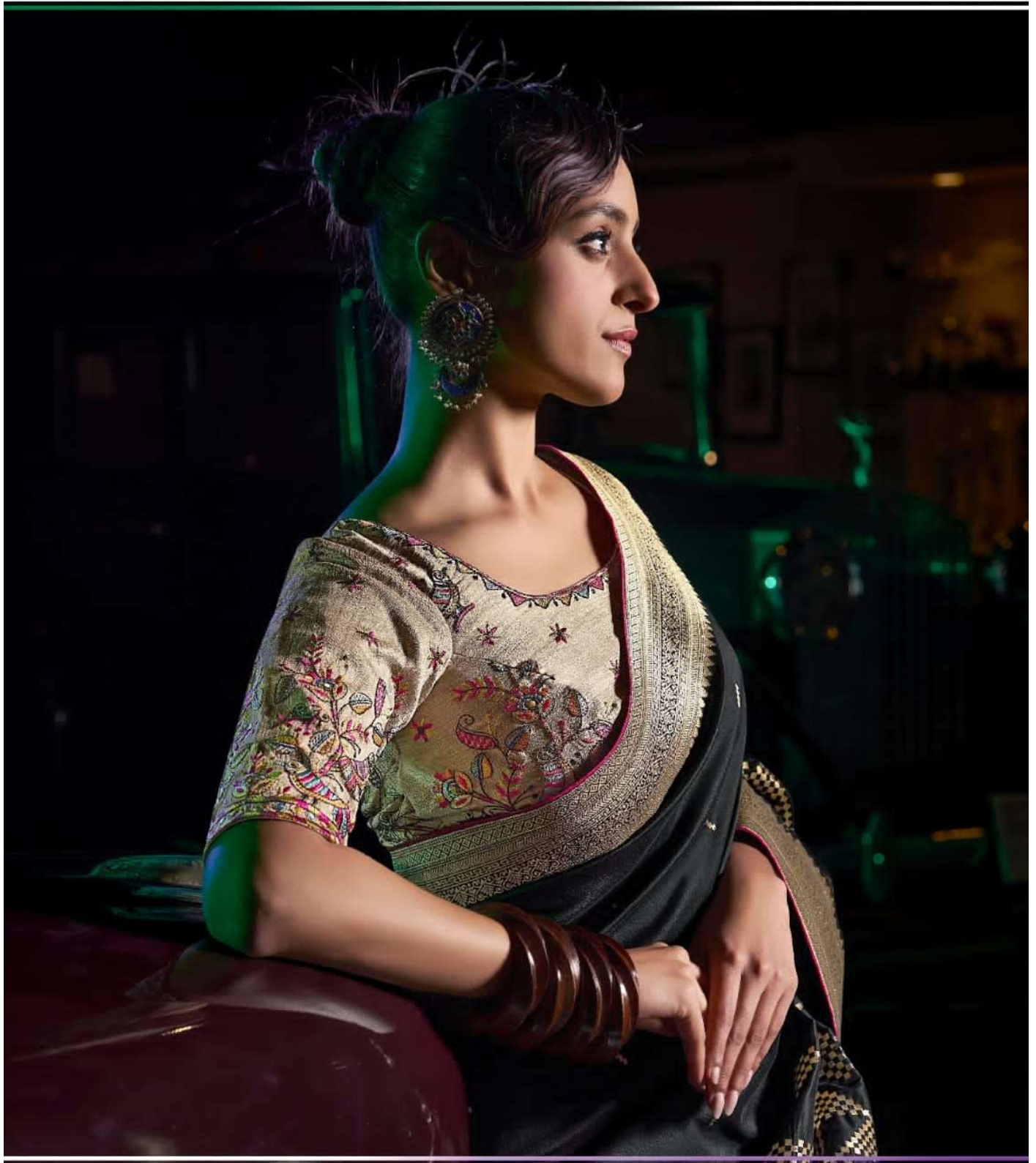
WRAPPED IN THE MYSTERY OF MIDNIGHT, THIS BLACK SILK SAREE IS AN ODE TO TIMELESS BEAUTY, WHERE TRADITION AND SOPHISTICATION MEET SEAMLESSLY.







K~7103



MIDNIGHT MAJESTY

WRAPPED IN THE MYSTERY OF MIDNIGHT, THIS BLACK SILK SAREE IS AN ODE TO TIMELESS BEAUTY, WHERE TRADITION AND SOPHISTICATION MEET SEAMLESSLY.



VELVET TWILIGHT

AS DEEP AS TWILIGHT AND AS LUXURIOUS AS VELVET, THIS WINE SILK SAREE SHIMMERS WITH GRACE, MAKING EVERY MOMENT FEEL EFFORTLESSLY GRAND.



HERITAGE IN THREADS

EVERY INTRICATE WEAVE OF THIS MAROON SAREE TELLS A STORY OF CRAFTSMANSHIP, DRAPING YOU IN A RICH LEGACY OF CULTURE AND ELEGANCE.



K~7102



ENCHANTED FOREST

INSPIRED BY THE RICHNESS OF NATURE, THIS GREEN SILK SAREE BLENDS INTRICATE WEAVES WITH A FRESH, GRACEFUL CHARM THAT CAPTIVATES AT EVERY GLANCE.



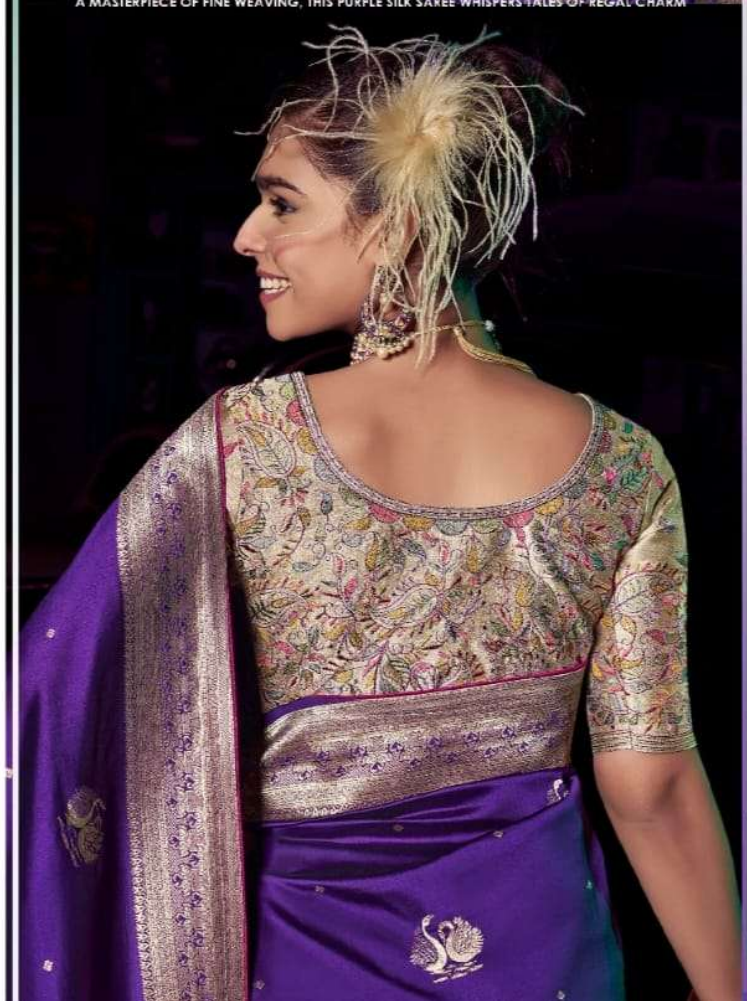
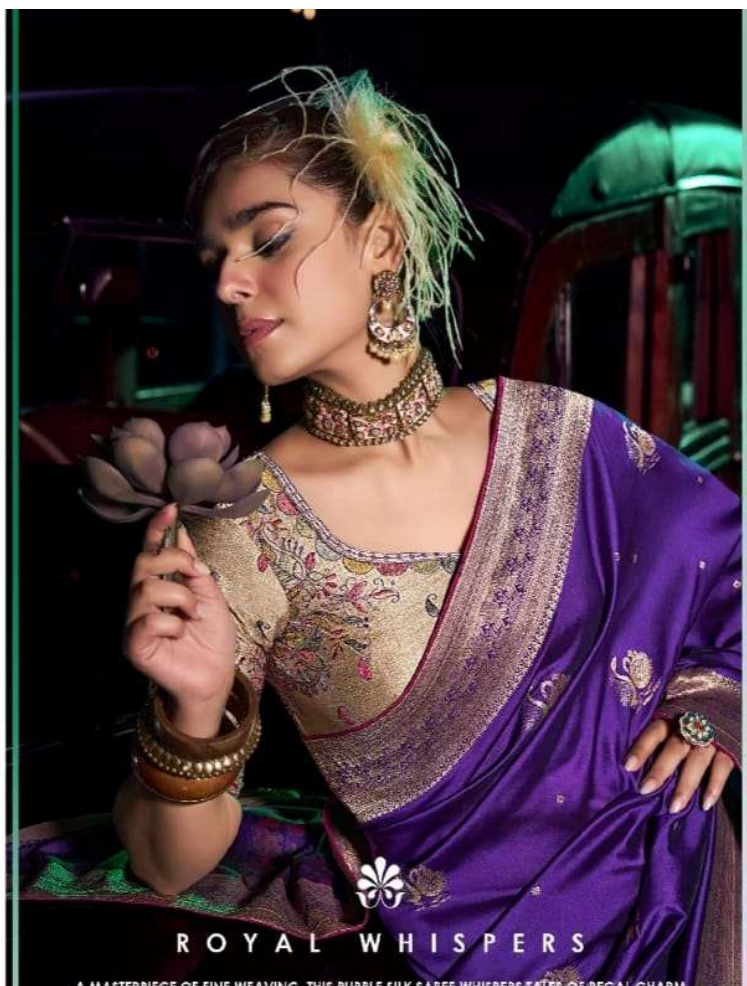
K~7105





VELVET TWILIGHT

AS DEEP AS TWILIGHT AND AS LUXURIOUS AS VELVET, THIS WINE SILK SAREE SHIMMERS WITH GRACE, MAKING EVERY MOMENT FEEL EFFORTLESSLY GRAND.





K~7106