



**RUPALI**  
FASHION TRENDS

*Adhitri*

(Masleen to masleen dupatta)

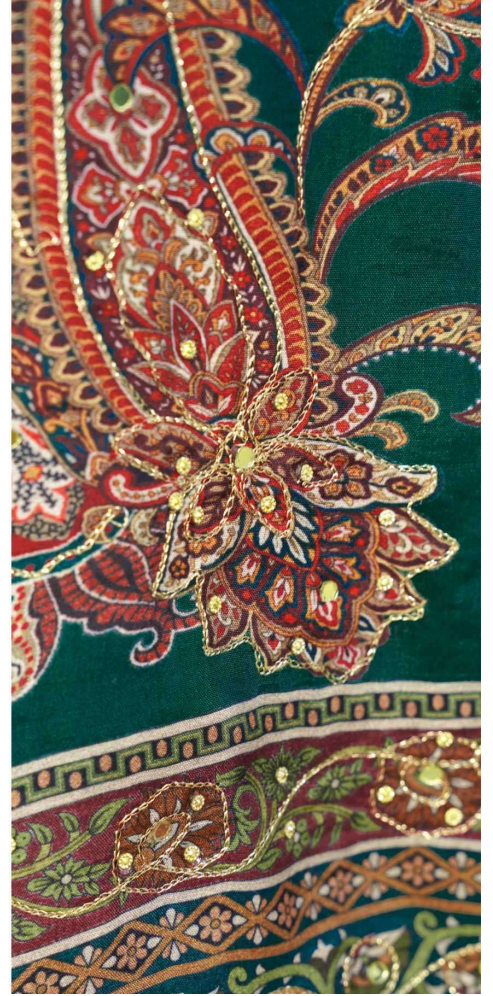






## STYLISH ELEGANCE

A dress is a piece of ephemeral architecture, designed to enhance the proportions of the female body.





  
**RUPALI**  
FASHION TRENDS

6602



A scintillating plethora of timeless masterpiece  
inspired by beauty from Indian culture.

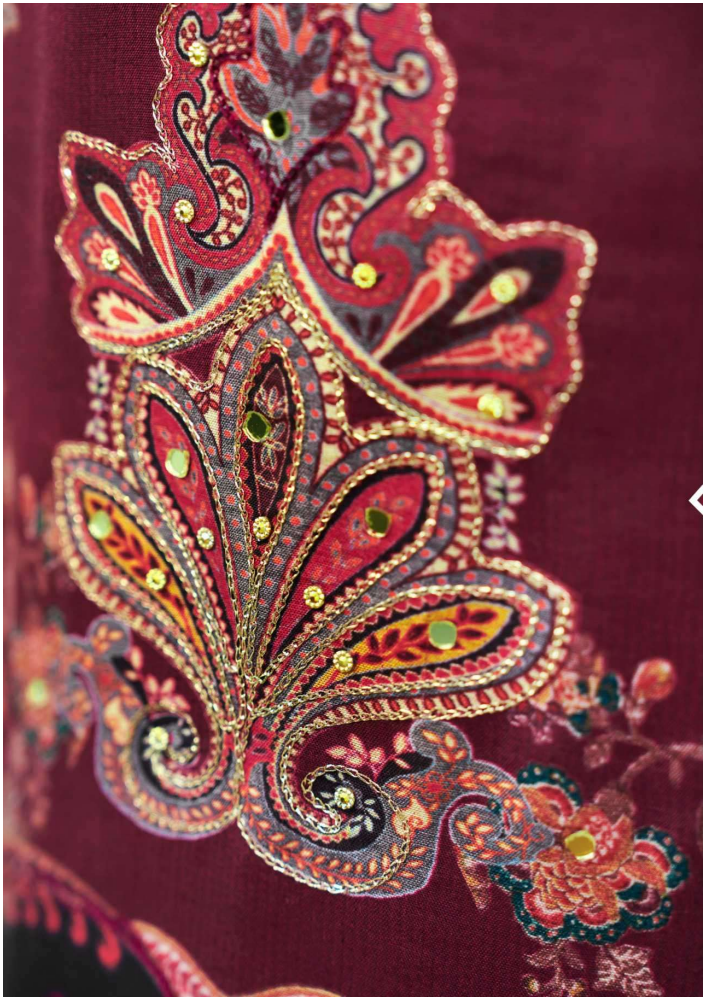


  
**RUPALI**  
FASHION TRENDS

*Adhitri*  
(Masleen to masleen dupatta)







A scintillating plethora of timeless masterpieces inspired by beauty from Indian culture.

6601








A scintillating plethora of timeless masterpiece inspired by beauty from Indian culture.

6601







**RUPALI**  
FASHION TRENDS

A scintillating plethora of timeless  
masterpiece inspired by  
beauty from Indian culture.

6604

