





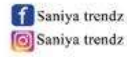
ST-2015 A



ST-2015 B



ST-2015 C





*Saniya* 1992

**ST-2015 C**

TOP: ORGANZA WITH EMBROIDERY WITH KHARSI WORK

BOTTOM: LINEN, SANTOON

DEPAUTA: ORGANZA WITH EMBROIDERY












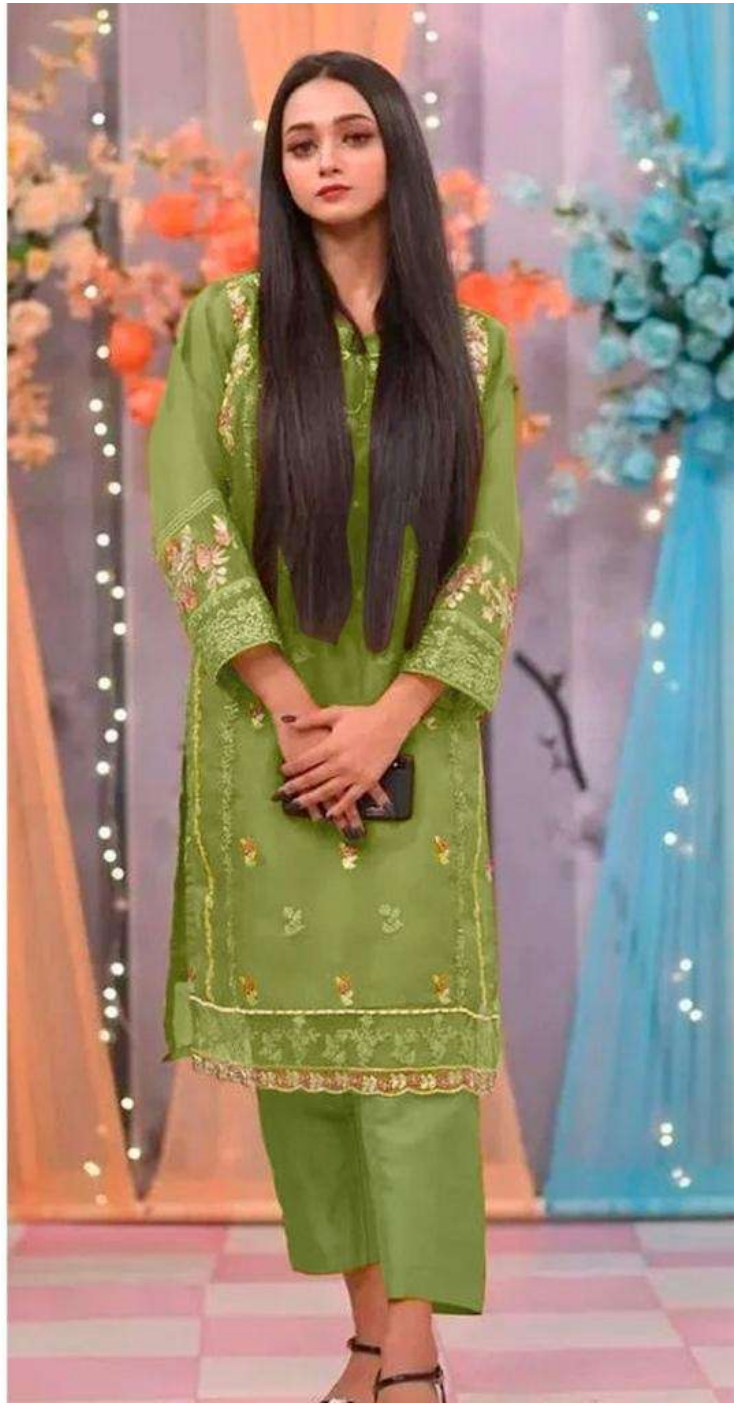
## ST-2015 A

TOP: **ORGENZA WITH EMBROIDERY  
WITH KHATLI WORK**

BOTTOM/INNER: **SANTOON**

DUPATTA: **ORGENZA WITH EMBROIDERY**

DRY CLEAN ONLY.    
DO NOT USE ANY BLEACH OR STAIN REMOVEG CHEMICAL.    
IRON THE FABRIC AT MODERATE TEMPERATURE. 








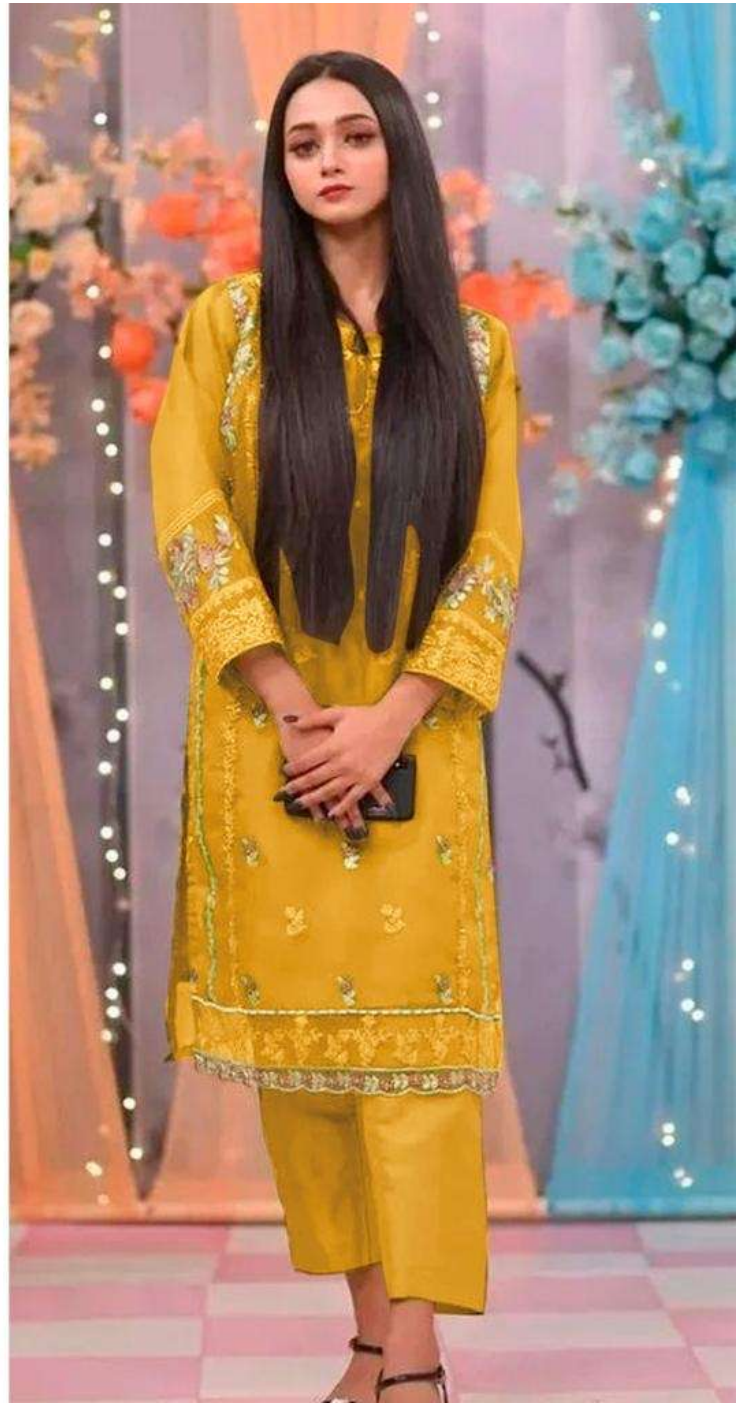
## ST-2015 C

TOP: **ORGENZA WITH EMBROIDERY  
WITH KHATLI WORK**

BOTTOM/INNER: **SANTOON**

DUPATTA: **ORGENZA WITH EMBROIDERY**

DRY CLEAN ONLY.    
DO NOT USE ANY BLEACH OR STAIN REMOVEG CHEMICAL.    
IRON THE FABRIC AT MODERATE TEMPERATURE. 










## ST-2015 B

TOP: **ORGENZA WITH EMBROIDERY  
WITH KHATLI WORK**

BOTTOM/INNER: **SANTOON**

DUPATTA: **ORGENZA WITH EMBROIDERY**

DRY CLEAN ONLY.   
DO NOT USE ANY BLEACH OR STAIN REMOVEG CHEMICAL.   
IRON THE FABRIC AT MODERATE TEMPERATURE. 



SAYA  
FASHION



**SAYA FASHION**



**D.NO.001**  
TOP: ORGENZA WITH EMBROIDERY WITH KHATLI WORK  
BOTTOMS: SANTOON  
DUPATTA: ORGENZA WITH EMBROIDERY

© 2023 SAYA FASHION. ALL RIGHTS RESERVED. CONTACT: 0300-123456789



