



bhkala®

Bridesmaid

VOL~20



#2151



#2152



#2153



#2154



#2155



#2156



bhkala

# Bridesmaid

VOL-20





 bhkala®

THIS BOOK / CATALOGUE / LOGO / ARE PROTECTED UNDER COPYRIGHT ACT.  
AN ILLEGA/UNAUTHORIZED REPRINT, PUBLISHING, REPRODUCTION, DISTRIBUTION AND MODIFICATION OF ANY IMAGES, PHOTOGRAPHS AND  
PRODUTCS, TOTALLY OR IN PART, FOR ANY PURPOSE, REASON OR CAUSE IS STRICTLY PROHIBITED AND PUNISHABLE UNDER LAW.



# Bridesmaid VOL~20

Design NO. (SKU)	Main Color	Lehenga & Belt Fabric	Choli Fabric	Dupatta Fabric	Size (Semi-Stitched)	Lehenga & Belt Work	Choli Work	Dupatta Work	Choli Length MTR	Lehenga Length MTR	Dupatta Length MTR	Weight
2151	Teal Blue	Georgette	Georgette	Georgette	UPTO 42 BUST AND WAIST	Thread with Sequince Embroidered Work	Thread with Sequince Embroidered Work	Thread with Sequince Embroidered Work	0.80 MTR	42 INCH	2.30 MTR	2 KG
2152	Maroon	Georgette	Georgette	Georgette	UPTO 42 BUST AND WAIST	Thread with Sequince Embroidered Work	Thread with Sequince Embroidered Work	Thread with Sequince Embroidered Work	0.80 MTR	42 INCH	2.30 MTR	2 KG
2153	Yellow	Georgette	Georgette	Georgette	UPTO 42 BUST AND WAIST	Thread with Sequince Embroidered Work	Thread with Sequince Embroidered Work	Thread with Sequince Embroidered Work	0.80 MTR	42 INCH	2.30 MTR	2 KG
2154	Purple	Georgette	Georgette	Georgette	UPTO 42 BUST AND WAIST	Thread with Sequince Embroidered Work	Thread with Sequince Embroidered Work	Thread with Sequince Embroidered Work	0.80 MTR	42 INCH	2.30 MTR	2 KG
2155	Navy Blue	Georgette	Georgette	Georgette	UPTO 42 BUST AND WAIST	Thread with Sequince Embroidered Work	Thread with Sequince Embroidered Work	Thread with Sequince Embroidered Work	0.80 MTR	42 INCH	2.30 MTR	2 KG
2156	Green	Georgette	Georgette	Georgette	UPTO 42 BUST AND WAIST	Thread with Sequince Embroidered Work	Thread with Sequince Embroidered Work	Thread with Sequince Embroidered Work	0.80 MTR	42 INCH	2.30 MTR	2 KG

THIS BOOK / CATALOGUE / LOGO / ARE PROTECTED UNDER COPYRIGHT ACT.  
 AN ILLEGAL/UNAUTHORIZED REPRINT, PUBLISHING, REPRODUCTION, DISTRIBUTION AND MODIFICATION OF ANY IMAGES, PHOTOGRAPHS AND PRODUCTS,  
 TOTALLY OR IN PART, FOR ANY PURPOSE, REASON OR CAUSE IS STRICTLY PROHIBITED AND PUNISHABLE UNDER LAW.

bhkala



Peeping up bright hues on ammy palette, with a  
counting of delicate  
floral motifs - it's just the traditional charm.  
#2156





शुभकला bhkala

Popping up bright hues on ivory palette with a touch of delicate floral motifs - it's just the way traditional returns.

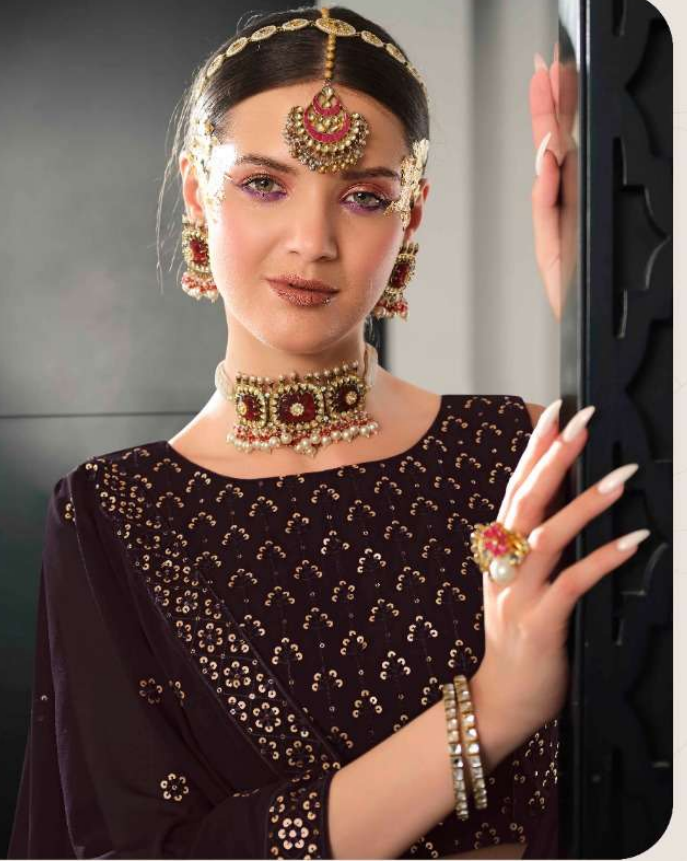




bhkala



Popping up bright, her oxa jewelry piece with a  
workmanship of collective  
formal motifs in it just like our traditional chakra.  
#2154





Peeping up bright hues on an  
eerie palette with a  
manipulation of delicate  
faded motifs – it's just the old  
traditional charm.  
#2153



bhkala



Popping up bright hues on an  
inky palette with a  
contrast of colors  
from earth - it's just the  
traditional drama.  
#2154

bhkala



Poping up bright hues on an  
eerie palette with a scattering of delicate  
floral motifs – it's pure the on  
traditional theme.  
#2151





bhkala



Popping up for girls born on an  
easy side and make  
a meaning of it for  
them. It's just the on  
motherhood theme.  
#2152







Popping up bright hues as an  
easy pattern with a  
maneuvering of delicate  
floral motifs - it's just the way  
we designed her in.

#2155





bhkala®

Bridesmaid

VOL~20