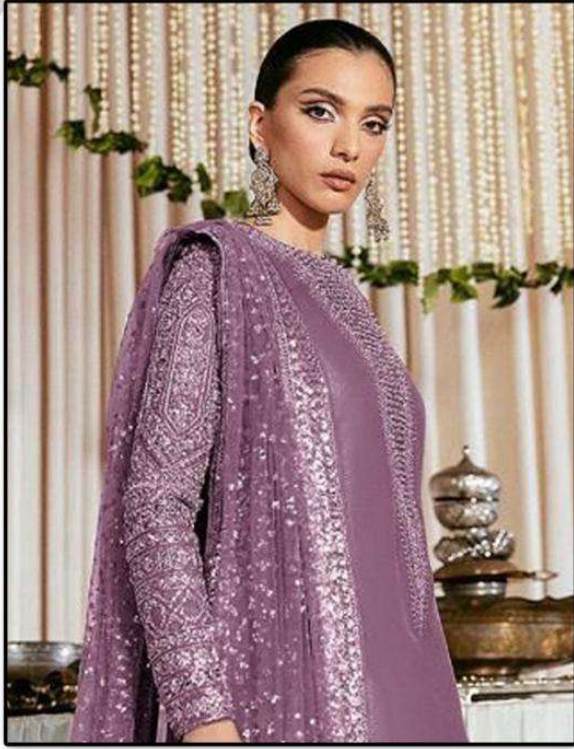




S
sheeshmahal®



#S-1320-E

Top- GEORGETTE
Bottom/Iner- SANTOON
Dupatta- NAZMEEN

WASHING INSTRUCTIONS
DO NOT USE ANY TYPE OF BLEACH OR OTHER BLEACHING AGENTS
BEFORE DYEING OR COLORING SHOULD BE DONE IN WATER
ALL COMPONENTS WASHED FOR 15 MINUTES
DO NOT KEEP IN HOT DRYER IN TRAY TO PREVENT COLOR LOSS
HIGH COLORED AND WHITE FABRICS SEPARATELY
IRON CLOTHES AT MODERATE TEMPERATURE DO NOT DRY FABRIC IN DIRECT SUNLIGHT
(EXTRA LACES/HANDKERCHIEFS AND ACCESSORIES ARE NOT INCLUDED)

S
sheeshmahal®



#S-1320-D

Top- GEORGETTE
Bottom/Iner- SANTOON
Dupatta- NAZMEEN

WASHING INSTRUCTIONS
DO NOT USE ANY TYPE OF BLEACH OR OTHER BLEACHING AGENTS
BEFORE DYEING OR COLORING SHOULD BE DONE IN WATER
ALL COMPONENTS WASHED FOR 15 MINUTES
DO NOT DRY IN DIRECT SUNLIGHT TO AVOID COLOR LOSS
DO NOT IRON. IF TINTED FROM WASHES TO AVOID COLOR LOSS
HIGH COLOURED AND WHITE FABRICS SEPARATELY
IRON CLOTHES AT MODERATE TEMPERATURE DO NOT DRY FABRIC IN DIRECT SUNLIGHT
(EXTRA LACES/HANDKERCHIEFS AND ACCESSORIES ARE NOT INCLUDED)



S
sheeshmahal®



#S-1320-B

Top- GEORGETTE
Bottom/Iner- SANTOON
Dupatta- NAZMEEN

WASHING INSTRUCTIONS
DO NOT USE ANY TYPE OF BLEACH OR CHLORINE BLEACHES
BEFORE DRYING CLOTHING FABRIC SHOULD BE SOAKED IN WATER
ALL COMPONENTS SEPARATELY FOR 15 MINUTES
DO NOT KEEP WET FABRIC IN TRAYED ROOM IN ORDER TO AVOID COUP MARKS
HIGH COLOURED AND WHITE FABRICS SEPARATELY
IRON CLOTHES AT MODERATE TEMPERATURE DO NOT DRY FABRIC IN DIRECT SUNLIGHT
EXTRA LACES, HANGINGS AND ACCESSORIES ARE NOT INCLUDED



S
sheeshmahal®



#S-1320-C

Top- GEORGETTE
Bottom/Iner- SANTOON
Dupatta- NAZMEEN

WASHING INSTRUCTIONS
DO NOT USE ANY TYPE OF BLEACH OR OTHER BLEACHING AGENTS
BEFORE DRYING OR WASHING SHOULD BE SOAKED IN WATER
ALL COMPONENTS WASHED FOR 15 MINUTES
DO NOT DRY IN DIRECT SUNLIGHT TO AVOID COLOR LOSS
DO NOT IRON. IF TINTED IRON INSTEAD TO AVOID COLOR LOSS
HIGH COLOURED AND WHITE FABRIC SEPARATELY
IRON CLOTHES AT MODERATE TEMPERATURE DO NOT DRY FABRIC IN DIRECT SUNLIGHT
(EXTRA LACES, HANGINGS AND ACCESSORIES ARE NOT INCLUDED)





S
sheeshmahal®



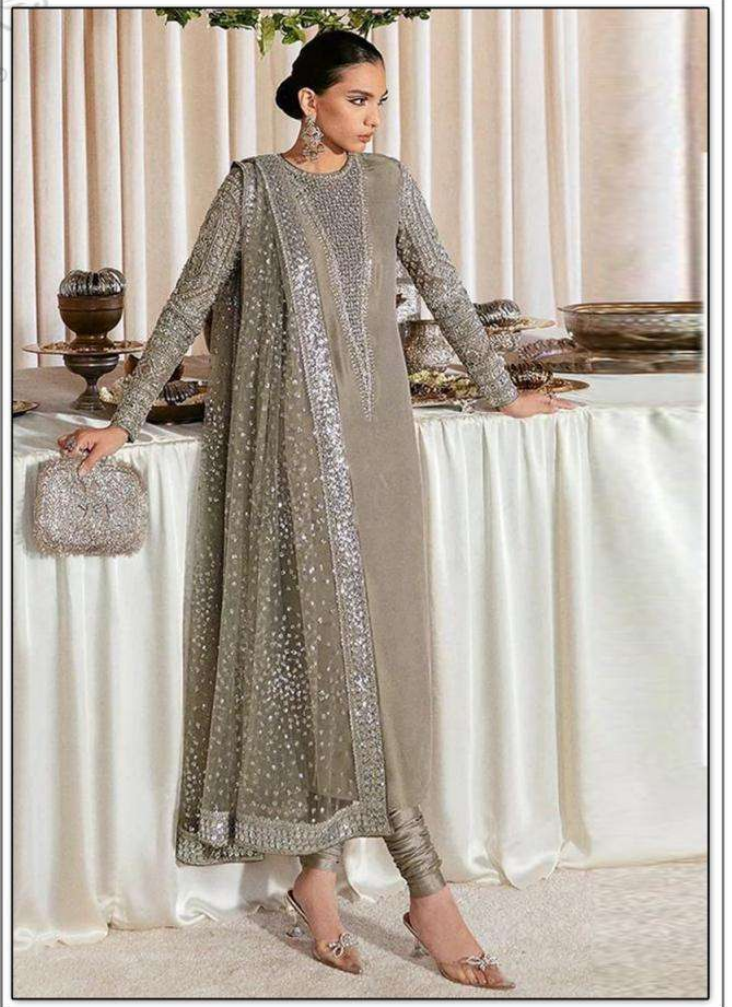
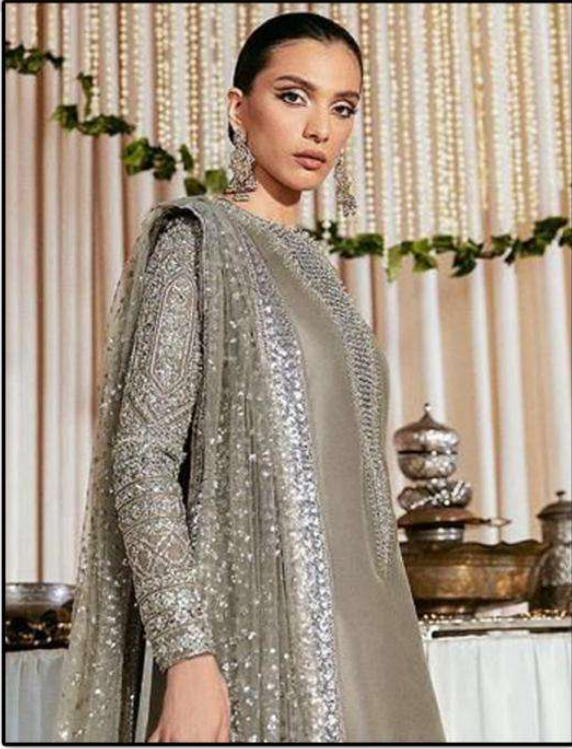
#S-1320-G

Top- GEORGETTE
Bottom/Iner- SANTOON
Dupatta- NAZMEEN

WASHING INSTRUCTIONS
DO NOT USE ANY TYPE OF BLEACH OR CHLORINE BLEACHES
BEFORE DYEING COLORING FABRIC SHOULD BE SOAKED IN WATER
ALL COMPONENTS SEPARATELY FOR 15 MINUTES
DO NOT USE HOT WATER IN TUBS TO RINSE TO AVOID COLOR BLEEDING
HIGH COLOURED AND WHITE FABRICS SEPARATELY
RINSE CLOTHES AT MODERATE TEMPERATURE DO NOT DRY FABRIC IN DIRECT SUNLIGHT
EXTRA LACES HANGINGS AND ACCESSORIES ARE NOT INCLUDED



S
sheeshmahal®

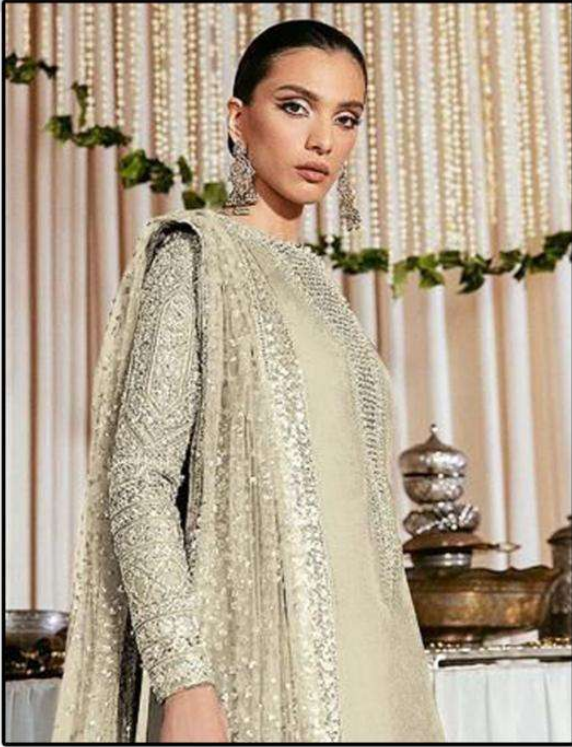


#S-1320-A

Top- GEORGETTE
Bottom/Iner- SANTOON
Dupatta- NAZMEEN

WASHING INSTRUCTIONS
DO NOT USE ANY TYPE OF BLEACH OR OTHER BLEACHING AGENTS
BEFORE DRYING OR WASHING SHOULD BE COMPLETED IN WATER
ALL COMPONENTS WASHED FOR 15 MINUTES
DO NOT USE HEAT, IN TUMBLER DRYER OR IRON TO AVOID COP MARKS
HIGH COLOURED AND WHITE FABRICS SEPARATELY
IRON CLOTHES AT MEDIUM TEMPERATURE DO NOT DRY FABRIC IN DIRECT SUNLIGHT
EXTRA LACES, HANGINGS AND ACCESSORIES ARE NOT INCLUDED

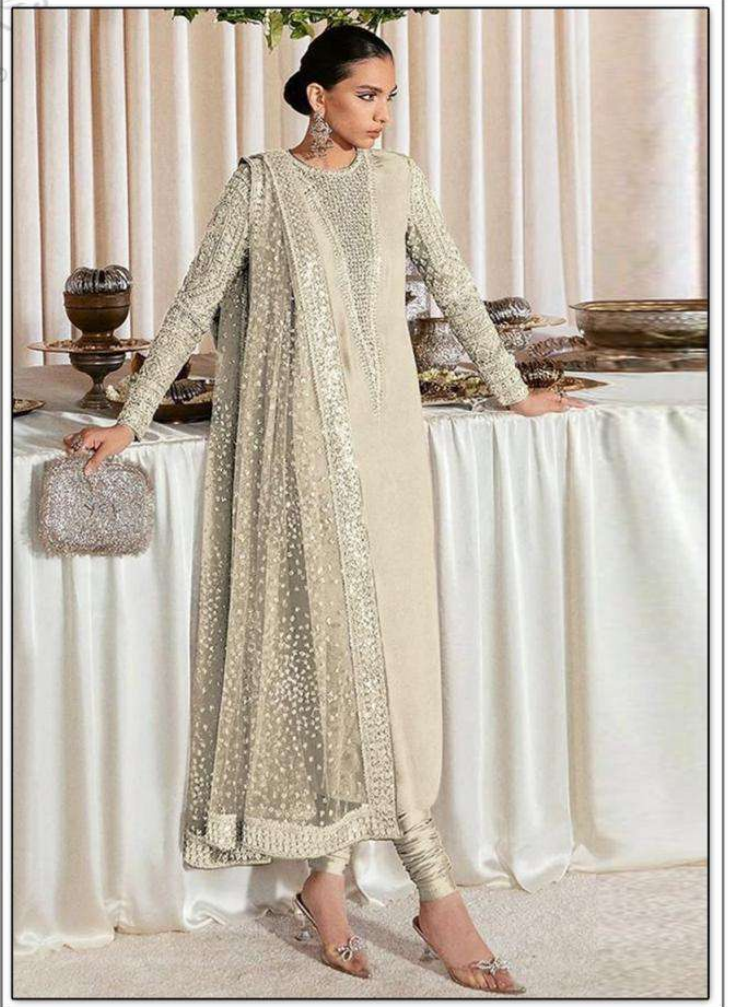
S
sheeshmahal®



#S-1320-F

Top- GEORGETTE
Bottom/Iner- SANTOON
Dupatta- NAZMEEN

WASHING INSTRUCTIONS
DO NOT USE ANY TYPE OF BLEACH OR OTHER BLEACHING AGENTS
BEFORE DYEING OR COLORING SHOULD BE DONE IN WATER
ALL COMPONENTS WASHED FOR 15 MINUTES
DO NOT KEEP ANY FABRIC IN CONTACT WITH DIRECT SUNLIGHT OR HEAT
HIGH COLOURED AND WHITE FABRICS SEPARATELY
IRON CLOTHES AT MODERATE TEMPERATURE DO NOT DRY FABRIC IN DIRECT SUNLIGHT
EXTRA LACES, HANGINGS AND ACCESSORIES ARE NOT INCLUDED






sheeshmahal®

TOP- GEORGETTE
BOTTOM/INER - SANTOON
DUPATTA - NET



#S-1320 A

#S-1320 B

#S-1320 C

#S-1320 D

#S-1320 E

#S-1320 F

#S-1320 G

