

A woman with dark hair styled in a bun, adorned with a large floral hair accessory featuring pink and white roses. She is wearing a white and gold embroidered outfit with a keyhole neckline and a white shawl with gold floral patterns. She has large, ornate gold earrings. The background is a solid brown color.

Rivāā[®]

BINDIA 3



2638

2639

2640

2641

2642

2643

2644

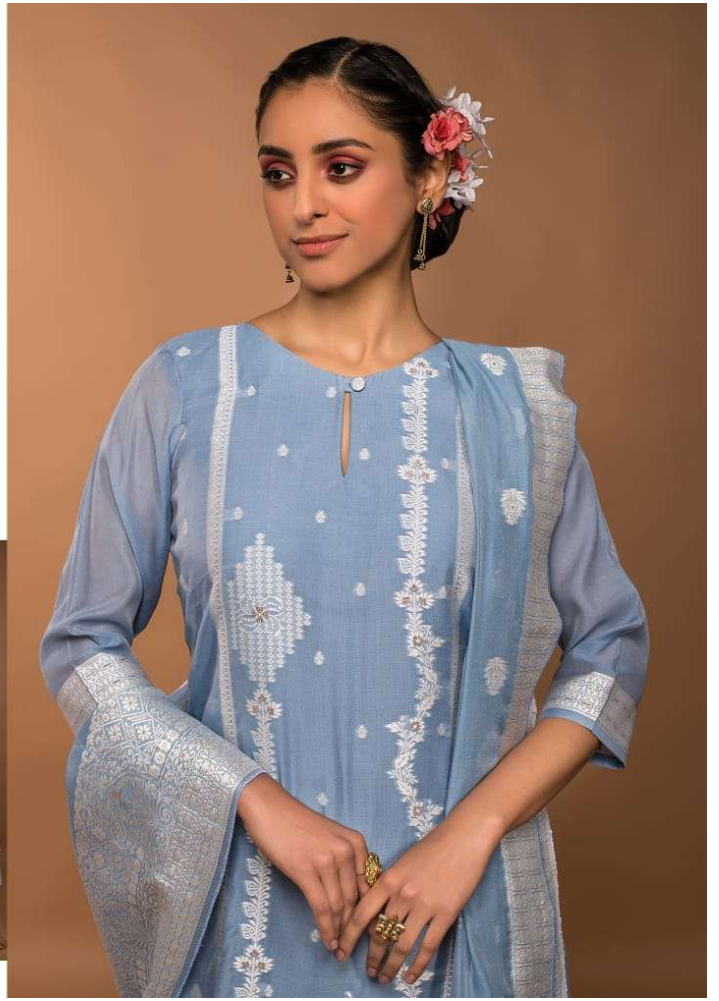


Rivāā[®]





2638

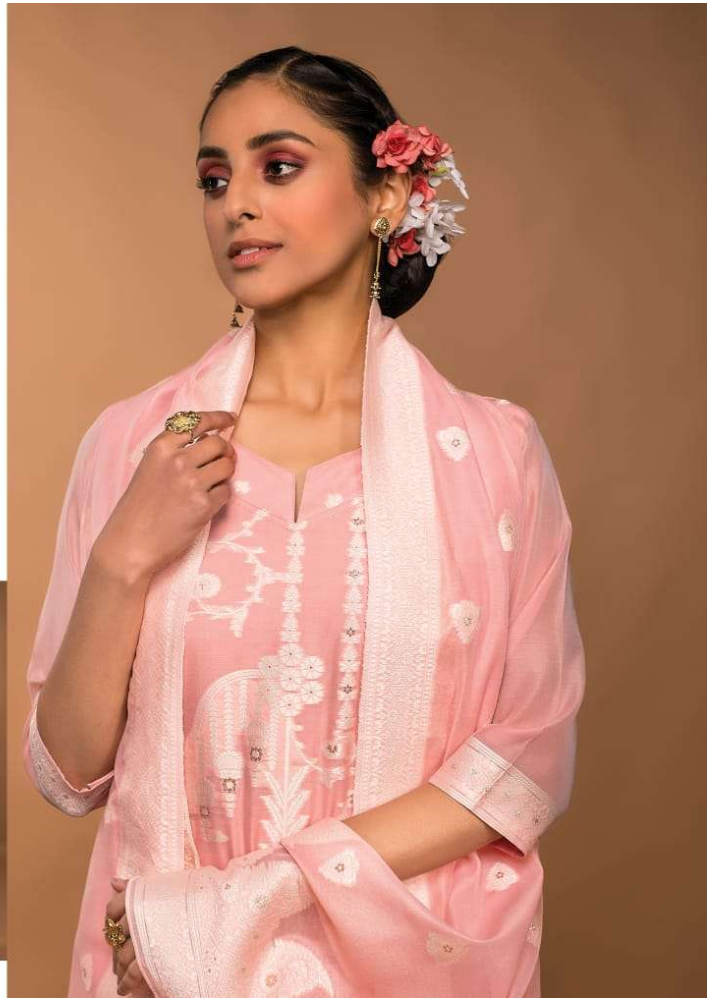




2643



2639





2640

A woman with dark hair styled in a bun, adorned with a large floral hair accessory featuring pink and white roses. She is wearing a white and gold embroidered outfit, including a white shawl with gold floral patterns and a white top with a gold keyhole neckline. She is also wearing large, ornate gold earrings. The background is a solid brown color.

Rivāā[®]

BINDIA 3



2644



2641

