







**TOP- CAMBRIC COTTON WITH HEVY EMBROIDERY**

M-232

**BOTTOM/INNER- SEMILOWN**

**DUPATTA/NET- HEVY NET WITH EMBROIDERY WORK**

-  DRY CLEAN ONLY.
-  DO NOT USE ANY BLEACH OR STAIN REMOVING CHEMICAL.
-  IRON THE FABRIC AT MODERATE TEMPERATURE.



**TOP- CAMBRIC COTTON WITH HEVY EMBROIDERY**

M-233

**BOTTOM/INNER- SEMILOWN**

**DUPATTA/NET- PRINTED ORGENZA WITH EMBROIDERY WORK**

-  DRY CLEAN ONLY.
-  DO NOT USE ANY BLEACH OR STAIN REMOVING CHEMICAL.
-  IRON THE FABRIC AT MODERATE TEMPERATURE.



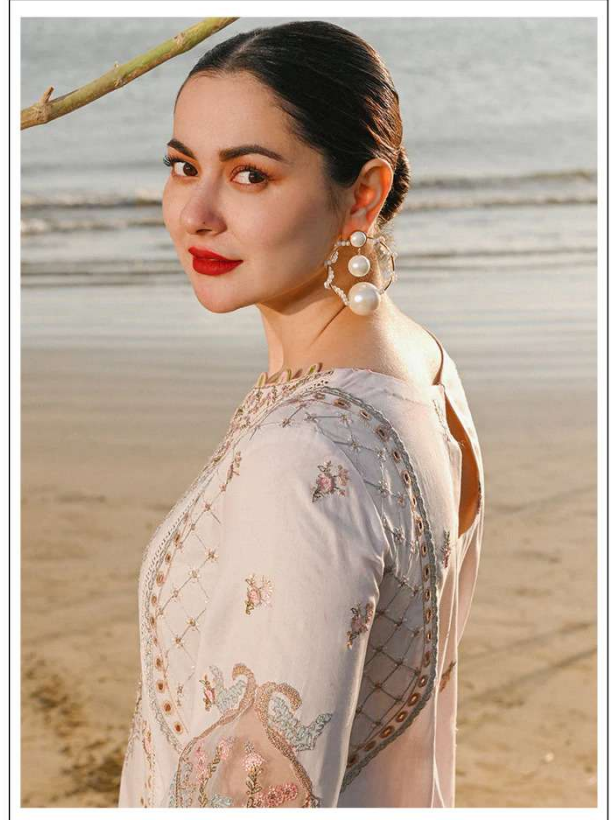
**TOP- CAMBRIC COTTON WITH HEVY EMBROIDERY**

M-234

**BOTTOM/INNER- SEMILOWN**

**DUPATTA/NET- HEVY NET WITH EMBROIDERY WORK**

- ☉ DRY CLEAN ONLY.
- ✘ DO NOT USE ANY BLEACH OR STAIN REMOVING CHEMICAL.
- ☎ IRON THE FABRIC AT MODERATE TEMPERATURE.



**TOP- CAMBRIC COTTON WITH HEVY EMBROIDERY**

M-231

**BOTTOM/INNER- SEMILOWN**

**DUPATTA/NET- HEVY NET WITH EMBROIDERY WORK**

- ☉ DRY CLEAN ONLY.
- ✗ DO NOT USE ANY BLEACH OR STAIN REMOVING CHEMICAL.
- ☎ IRON THE FABRIC AT MODERATE TEMPERATURE.