





**TOP- ORGENZA PEDING WITH EMBROIDERY  
WITH CUT WORK**

M-241-A

**INNER- PEDING SANTOON**

**BOTTOM- SANTOON**

**DUPATTA- PEDING BUTTERFLY NET WITH  
EMBROIDERY WORK**

☉ DRY CLEAN ONLY.

☒ DO NOT USE ANY BLEACH OR STAIN REMOVING CHEMICAL.  
☒ IRON THE FABRIC AT MODERATE TEMPERATURE.



**TOP- ORGENZA PEDING WITH EMBROIDERY  
WITH CUT WORK**

M-241-D

**INNER- PEDING SANTOON**

**BOTTOM- SANTOON**

**DUPATTA- PEDING BUTTERFLY NET WITH  
EMBROIDERY WORK**

☉ DRY CLEAN ONLY.  
✘ DO NOT USE ANY BLEACH OR STAIN REMOVING CHEMICAL.  
☎ IRON THE FABRIC AT MODERATE TEMPERATURE.



**TOP- ORGENZA PEDING WITH EMBROIDERY  
WITH CUT WORK**

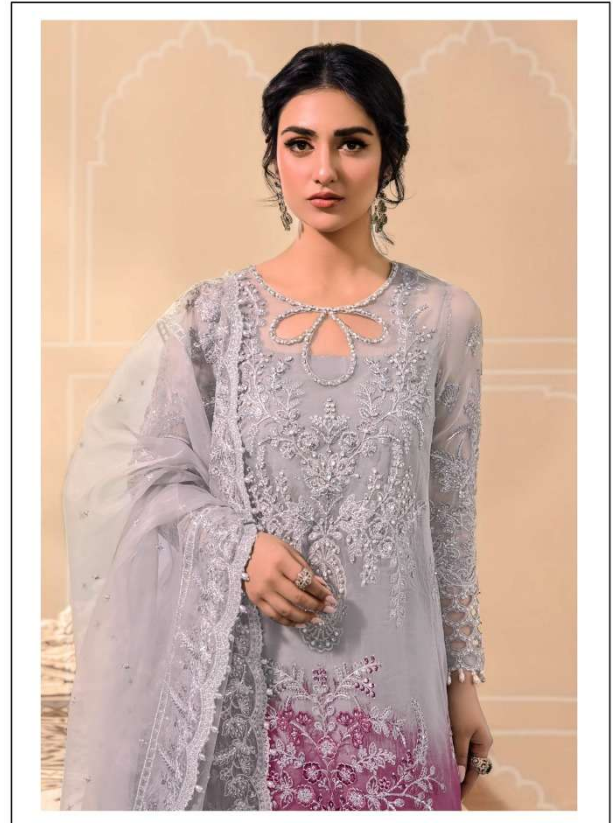
M-241-B

**INNER- PEDING SANTOON**

**BOTTOM- SANTOON**

**DUPATTA- PEDING BUTTERFLY NET WITH  
EMBROIDERY WORK**

☉ DRY CLEAN ONLY.  
✗ DO NOT USE ANY BLEACH OR STAIN REMOVING CHEMICAL.  
☎ IRON THE FABRIC AT MODERATE TEMPERATURE.



**TOP- ORGENZA PEDING WITH EMBROIDERY  
WITH CUT WORK**

M-241-C

**INNER- PEDING SANTOON**

**BOTTOM- SANTOON**

**DUPATTA- PEDING BUTTERFLY NET WITH  
EMBROIDERY WORK**

 DRY CLEAN ONLY.

 DO NOT USE ANY BLEACH OR STAIN REMOVING CHEMICAL.  
 IRON THE FABRIC AT MODERATE TEMPERATURE.

