

TOP- JORJAT WITH EMBROIDERY

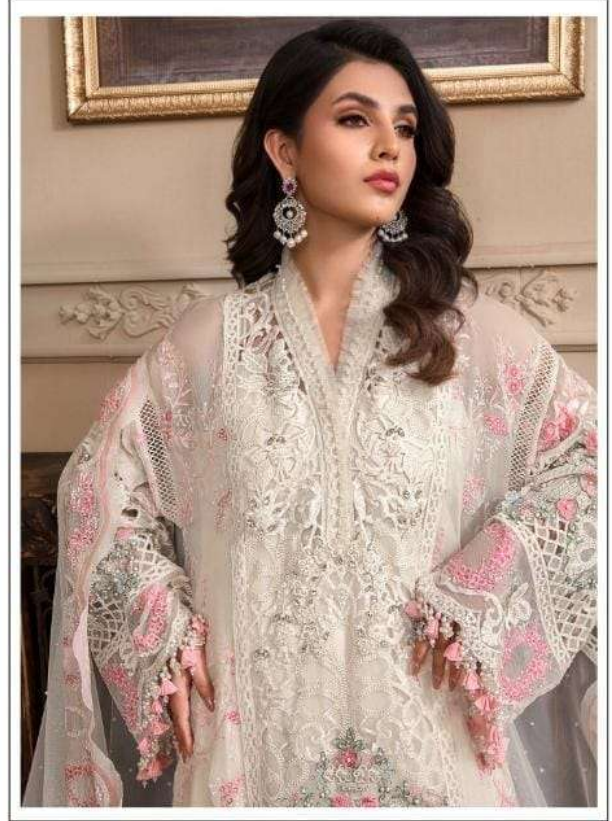
BOTTOM/INNER- SANTOON

DUPATTA- NAZMEEN WITH EMBROIDERY

M-242-C



☞ DRY CLEAN ONLY.
✗ DO NOT USE ANY BLEACH OR STAIN REMOVING CHEMICAL.
☎ IRON THE FABRIC AT MODERATE TEMPERATURE.



TOP- JORJAT WITH EMBROIDERY

BOTTOM/INNER- SANTOON

DUPATTA- NAZMEEN WITH EMBROIDERY

M-242-B

-  DRY CLEAN ONLY.
-  DO NOT USE ANY BLEACH OR STAIN REMOVING CHEMICAL.
-  IRON THE FABRIC AT MODERATE TEMPERATURE.



TOP- JORJAT WITH EMBROIDERY

M-242-D

BOTTOM/INNER- SANTOON

DUPATTA- NAZMEEN WITH EMBROIDERY

-  **DRY CLEAN ONLY.**
-  **DO NOT USE ANY BLEACH OR STAIN REMOVING CHEMICAL.**
-  **IRON THE FABRIC AT MODERATE TEMPERATURE.**



TOP- JORJAT WITH EMBROIDERY

M-242-A

BOTTOM/INNER- SANTOON

DUPATTA- NAZMEEN WITH EMBROIDERY

-  **DRY CLEAN ONLY.**
-  **DO NOT USE ANY BLEACH OR STAIN REMOVING CHEMICAL.**
-  **IRON THE FABRIC AT MODERATE TEMPERATURE.**