



*w o r d o n t h e s t r e e t*

*Bright neons, graffiti scrawls and the artsy feel of  
'80s pop pave the way for the new*

*the*  
**Spring**  
**Reverie**





*Luxe*  
*Premium*

**D.NO.006**



*Luxe*  
*Premium*

**D.NO.004**



*Luxe*  
*Pension*

**D.NO.005**



*Luxe*  
*Premium*

**D.NO.002**



**A**  
**ut**  
**ABOVE**

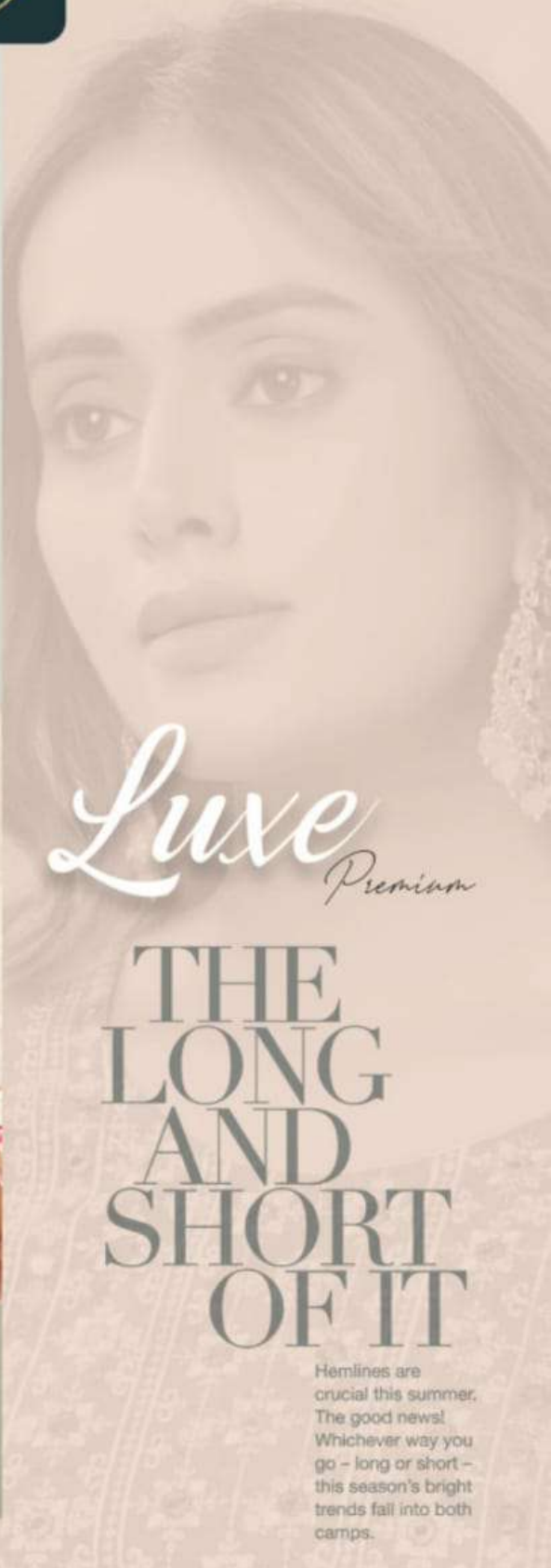
*Tailoring breezes back  
this season with a  
refreshing touch of  
formality: cue the longer,  
leaner wardrobe solution.*



*Luxe*  
*Premium*

**D.NO.003**





*Luxe*  
*Premium*

# THE LONG AND SHORT OF IT

Hemlines are crucial this summer. The good news! Whichever way you go – long or short – this season's bright trends fall into both camps.

# Beyond THE SEA

THIS SEASON'S VIVID NEW SHADES PACK A POWERFUL PUNCH. TANGENT, CYBER AND DYNAMIC TONES MAKE FOR A TASTY COMBINATION, AS BOLD COLOR BLOCK DRESSES LIGHT UP THE DAY.



*the*  
**CALM**  
*and the*  
**STORM**

*This season, we're celebrating the clash of two opposites  
— the elegant black and the sophisticated white — with a  
pinch of natural hues. Thrown together, they unleash that  
abstract magic that lies in the unexpected.*





*Luxe*  
*Premium*

**D.NO.001**

# Luxe Premium



**D.NO.001**



**D.NO.002**



**D.NO.003**



**D.NO.004**



**D.NO.005**



**D.NO.006**



*Luxe*  
*Premium*



Luxe  
Premium

PERFECT  
HARMONY

*Blended with emotions, dyed in cherished hues and lively  
as the waves. The taste of friendship is everlasting.*